



BRIDGETECH products adhere to The Global Standard of Digital Television.



The patented MediaWindow™ is a key technology for media over IP analysis.



The VB20 is an integral part of the breakthrough Full Service Monitoring concept.



Return Data Path enables sourcing of the remote signal back to the NOC or HeadEnd for detailed analysis. Reduces OPEX through fewer truck rolls and on-site visits.



With Eii (External integration interface) all IP-Probes can be easily integrated into 3rd party NMS / OSS systems.

**Monitoring critical parameters such as loss distance and detailed jitter values give accurate readings of network performance. With the MediaWindow™ historical data can be easily accessed for meaningful visualisation of media flow in IP networks. Whether establishing or modifying service settings on complex routers and switches, the VB20 facilitates the whole process.**

The ability to monitor continuously 180 services with all measurements makes the portable VB20 invaluable for field use. Its ruggedised exterior and fan-less design make this probe the perfect fault-finding tool for the mobile engineer. With full support for both the MPEG-2 TS and MFRTP encapsulation standards and all current codecs, the VB20 is the tool of choice. This is an invaluable helpmate for any network engineer attempting multicast detection on multiple VLANs or in the process of IGMP tracking. Fault finding in complex IP networks just got a lot easier.

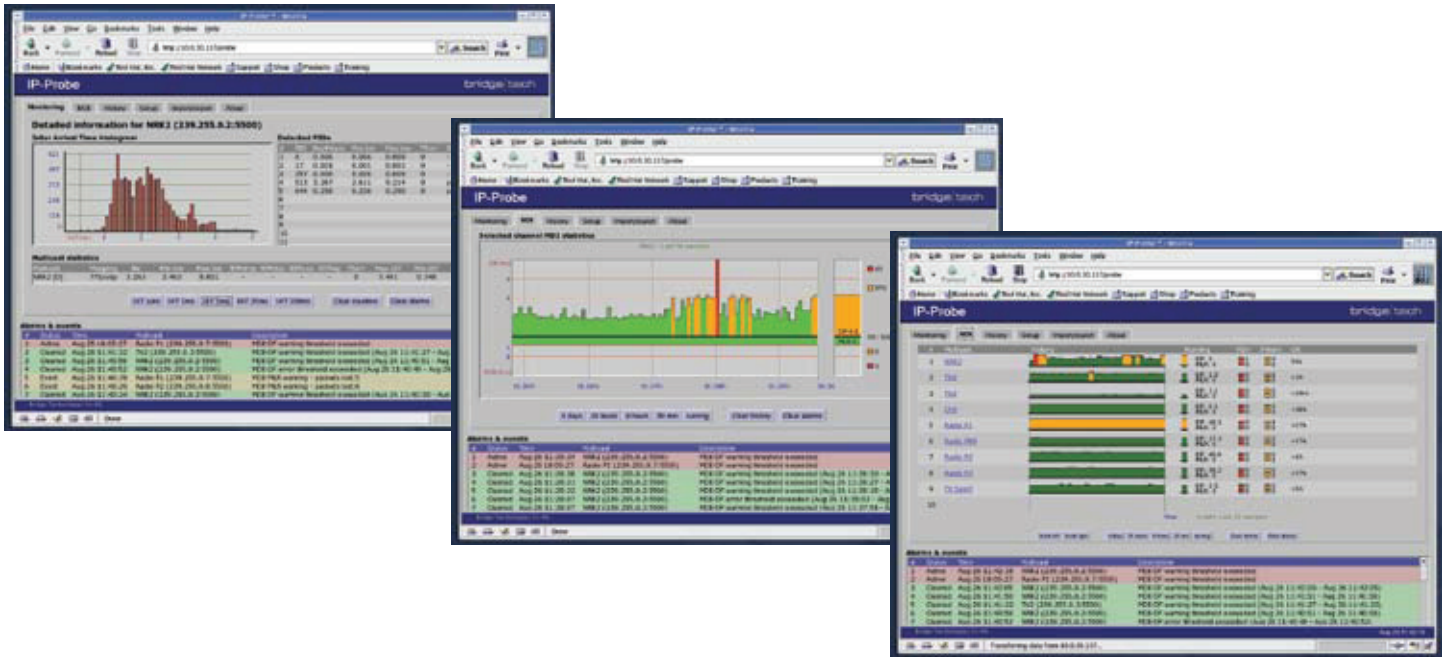
The power of confidence monitoring is further enhanced by continuous monitoring and alarming of parameters, bandwidth overflow/underflow and signal loss. Based on a highly sophisticated threshold template system alarm granularity can be set to reflect actual status, irrelevant alarms being effectively masked. The unique FSM™ framework also allows checking and continuous monitoring of middleware and network services vital to customer QoE.

SNMP trapping and XML export enable the IP-Probes to be implemented in any NMS system (with alarm generation either directly from the probes themselves, or via the VBC server for advanced alarm correlation and filtering).

Each IP-Probe runs an HTTP server with the client as a web browser, so no need to install custom software on computers needing access to the measurement data. Modern web 2.0 techniques such as AJAX are used to facilitate advanced interface behaviour in a standard web browser without the need for any plug-ins.

#### FEATURES INCLUDE:

- 1x 10/100/1000T Ethernet port
- 1x SFP Optical GigE port
- 1x 10/100T Ethernet management port
- 1x ASI Input port
- Built-in USB to RS232 converter
- Ruggedised chassis
- Fanless convection-cooled operation
- Built-in 100-240VAC PSU
- Real-time monitoring of 180 multicasts/unicasts
- Monitors Transport Stream into IP according to ETSI TS 102 034
- Microsoft MediaRoom™ X-bit RTP header extension support
- IGMPv2 and IGMPv3 SSM support
- 802.1Q VLAN tagging support and detection
- Thumbnail decoding of MPEG2 and MPEG4 streams, SD and HD
- Packet jitter and media loss measurements
- Configurable alarm handling including severity level definitions
- RTP dropped, duplicate and out-of-order measurements
- Type of Service (TOS) and Time to Live (TTL) displaying
- Time loss distance measurements (RFC3357)
- MediaWindow™ visualisation technology
- FSM™ monitoring of middleware services
- IGMP monitoring and logging
- Advanced real-time IP protocol breakdown and analysis with individual bandwidth and frame size displaying
- Alarm triggered recording of a multicast/unicast or selectable ASI service
- RDP™ of IP unicast, multicast or selected ASI service
- Searchable alarm lists
- Built-in web-based management with access control
- Intuitive GUI using patented visualisation techniques for ease of system overview: MediaWindow and microETR (ETR290 option)
- Optional central management via VideoBridge Controller server
- SNMP multi-destination trapping
- Eii™ External Integration Interface for easy integration into any 3rd party OSS / NMS system
- Compatible with Cisco™ VAMS/CMM
- NTP client functionality (RFC2030)
- DHCP client support (RFC2131)
- Remote software and license upgradeable



## ENVIRONMENT SPECIFICATIONS:

Operating temperature: 0°C to 50°C  
 Storage temperature: -20°C to 70°C  
 Operating humidity: 5% to 95% non-condensing

## CONNECTOR SPECIFICATIONS:

10/100/1000 GigE input: RJ-45  
 10/100 Ethernet management: RJ-45  
 Optical input: SFP Module  
 ASI input: 75 ohms BNC  
 RS232 port: USB Type A connector  
 AC power: IEC 320 connector

## POWER SUPPLY REQUIREMENTS:

Input voltage: 100 to 240V AC  
 Power required: 20 VA, typical @ 220V AC  
 Power dissipated: Maximum 20W

## NETWORK SPECIFICATIONS:

10/100/1000 BASE-T Ethernet (802.3u and 802.3ab)  
 SFP interface for optical networks  
 10/100 BASE-TX Ethernet management (802.3u)

## MECHANICAL SPECIFICATIONS:

W x H x D: 280 x 38 x 220mm.  
 Weight: 3,6 kg

## ETSI TR 101 290 OPTION FUNCTIONALITY

- Full real-time ETSI TR 101 290 alarming and analysis (Pri 1, 2, 3) for 2 transport streams in parallel (Ethernet and ASI)
- Configurable round-robin functionality for each ETSI TR 101 290 analysis engine
- Conforms to both DVB and ATSC specifications
- Table and descriptor parsing of PSI/SI and PSIP presented as table summary and full table breakdown (including hex dump)
- Bitrate monitoring and alarming (TS, service and PID level)
- Monitoring of vital CA parameters
- Compare view for comparison of transport streams and services across different interfaces
- Sophisticated threshold template system for detailed alarm handling control at transport stream, service and component level

## ADDITIONAL ETSI TR 101 290 MONITORING ENGINE OPTION

- Full real-time ETSI TR 101 290 alarming and analysis (Pri 1, 2, 3) for additional Ethernet transport streams

## COMPLIANCE:

CE-marked in accordance to low voltage directive (LVC) 73/23/EEC and EMC directive 89/336/EEC. Compliant to requirements for US and Canada. Designed for CSA approval.

BRIDGETECHNOLOGIES Co AS continuously improves on products and reserves the right to modify the specifications without prior notice.

The BRIDGETECH name, the BRIDGETECH logo and all other related logos are registered trademarks belonging to BRIDGE TECHNOLOGIES Co AS

## BRIDGE TECHNOLOGIES Co AS

Address: Mølleparken 4  
 N-0459 Oslo  
 Norway

Phone main: +47 22 38 51 00  
 Telefax: +47 22 38 51 01

E-mail: info@bridgetech.tv  
 Internet: www.bridgetech.tv